

WILLIAM TELL

OVERTURE

Violine I.

Gioachino Rossini

Andante. (♩=54)

*Vcl. II. Solo.

Measures 1-40 of the Violine I part. The tempo is Andante (♩=54). The key signature is one sharp (F#). The time signature is 3/4. The score includes dynamics such as *p*, *pp*, and *cresc.*. Fingerings 1, 2, and 3 are indicated. A first ending bracket labeled 'A' spans measures 24-26.

Allegro. (♩=108)

Measures 41-80 of the Violine I part. The tempo changes to Allegro (♩=108). The key signature remains G major. The time signature is 3/4. The score includes dynamics such as *pp*, *p*, and *cresc.*. Fingerings 1 and 2 are indicated. A first ending bracket labeled 'B*' spans measures 74-76. The score includes parts for Viol. II, Viola, and Fl. (Flute).

Violin I musical score, measures 87-128. The score is written in treble clef with a key signature of one sharp (F#). The tempo is marked *ff* (fortissimo). The music features a complex, fast-paced melody with many sixteenth and thirty-second notes, often beamed together. The score includes several dynamic markings: *ff* (fortissimo) and *f* (forte). The key signature changes to D major at measure 119, indicated by a 'D' above the staff. The score ends with a first ending bracket and a final measure marked with a '1'.

Measures 87-90: *ff*

Measures 91-94: *ff*

Measures 95-98: *ff*

Measures 99-102: *ff*

Measures 103-106: *ff*

Measures 107-110: *ff*

Measures 111-114: *ff*

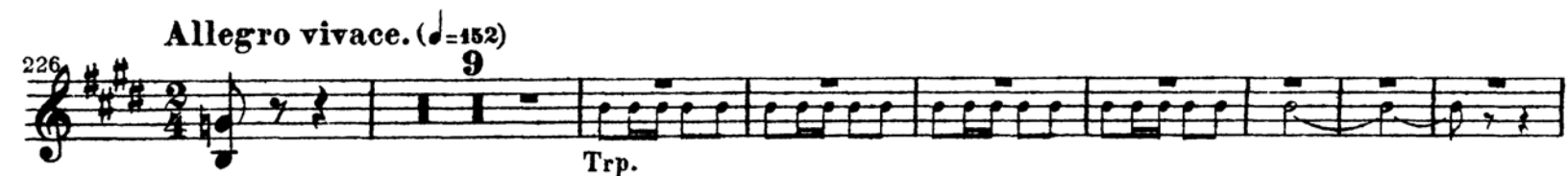
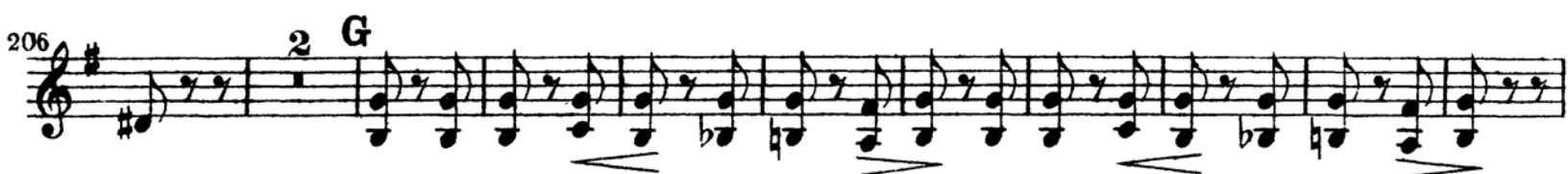
Measures 115-118: *ff*

Measures 119-122: *ff*

Measures 123-126: *ff*

Measures 127-128: *ff*

Violine I.



Violin I musical score, measures 255-311. The key signature is D major (two sharps). The score is written on a single staff with a treble clef. The music features a variety of rhythmic patterns, including eighth and sixteenth notes, and rests. Dynamics include *ff* (fortissimo), *fp* (fortissimo piano), *pp* (pianissimo), and *tutta forza* (with full force). Fingerings are indicated by numbers 1-5 above notes. A section starting at measure 295 is marked with a 'V' and 'tutta forza'. A section starting at measure 300 is marked with a 'K' and '2' above the first note. The score ends with a *sf* (sforzando) marking at measure 311.

Measures 255-260: *ff* (fortissimo) dynamic. Measure 260 has a *sf* (sforzando) marking.

Measures 261-272: *fp* (fortissimo piano) dynamic.

Measures 273-282: *fp* (fortissimo piano) dynamic. Measure 273 has a *fp* marking.

Measures 283-288: *pp* (pianissimo) dynamic. Measure 283 has a *pp* marking.

Measures 289-294: *ff* (fortissimo) dynamic. Measure 289 has a *ff* marking.

Measures 295-304: *ff* (fortissimo) dynamic. Measure 295 has a *ff* marking. Measure 295 is marked with a 'V' and 'tutta forza'. Measure 295 is marked with a 'K' and '2' above the first note.

Measures 305-310: *sf* (sforzando) dynamic. Measure 305 has a *sf* marking.

Measures 311-316: *sf* (sforzando) dynamic. Measure 311 has a *sf* marking.

Violine I.

Musical score for the right hand of a piano, measures 316-385. The key signature is three sharps (F#, C#, G#) and the time signature is 3/4. The score is written on a single staff.

Measures 316-321: Marked **L** (Lento) and **pp** (pianissimo). The music features a series of eighth and sixteenth notes, with some triplets indicated by a '3' over the notes.

Measures 322-333: Continuation of the melodic line with various rhythmic patterns, including eighth and sixteenth notes.

Measures 334-345: The tempo changes to **M** (Moderato). The music becomes more rhythmic, featuring eighth and sixteenth notes.

Measures 346-357: The dynamics change to **ff** (fortissimo). The music consists of a series of eighth notes, creating a more active texture.

Measures 358-372: Continuation of the eighth-note pattern, maintaining the **ff** dynamic.

Measures 373-378: Marked **N²** (likely a fingering or articulation instruction) and **fp** (fortissimo-pianissimo). The music features a series of eighth notes with some accents.

Measures 379-384: Continuation of the eighth-note pattern, with some notes marked with a '3' for triplet.

Measures 385-390: The dynamics change to **ff** (fortissimo) and then **f** (forte). The music features a series of eighth notes, ending with a final flourish.

392

399 *stringendo*

406 *f*

412 *sf* *sf* *sf*

421 *P₀*

428

435 *sf* *sf* *sf* *sf*

444 *ff*

451 *G. P.* *sf* *ff*

458

463

470